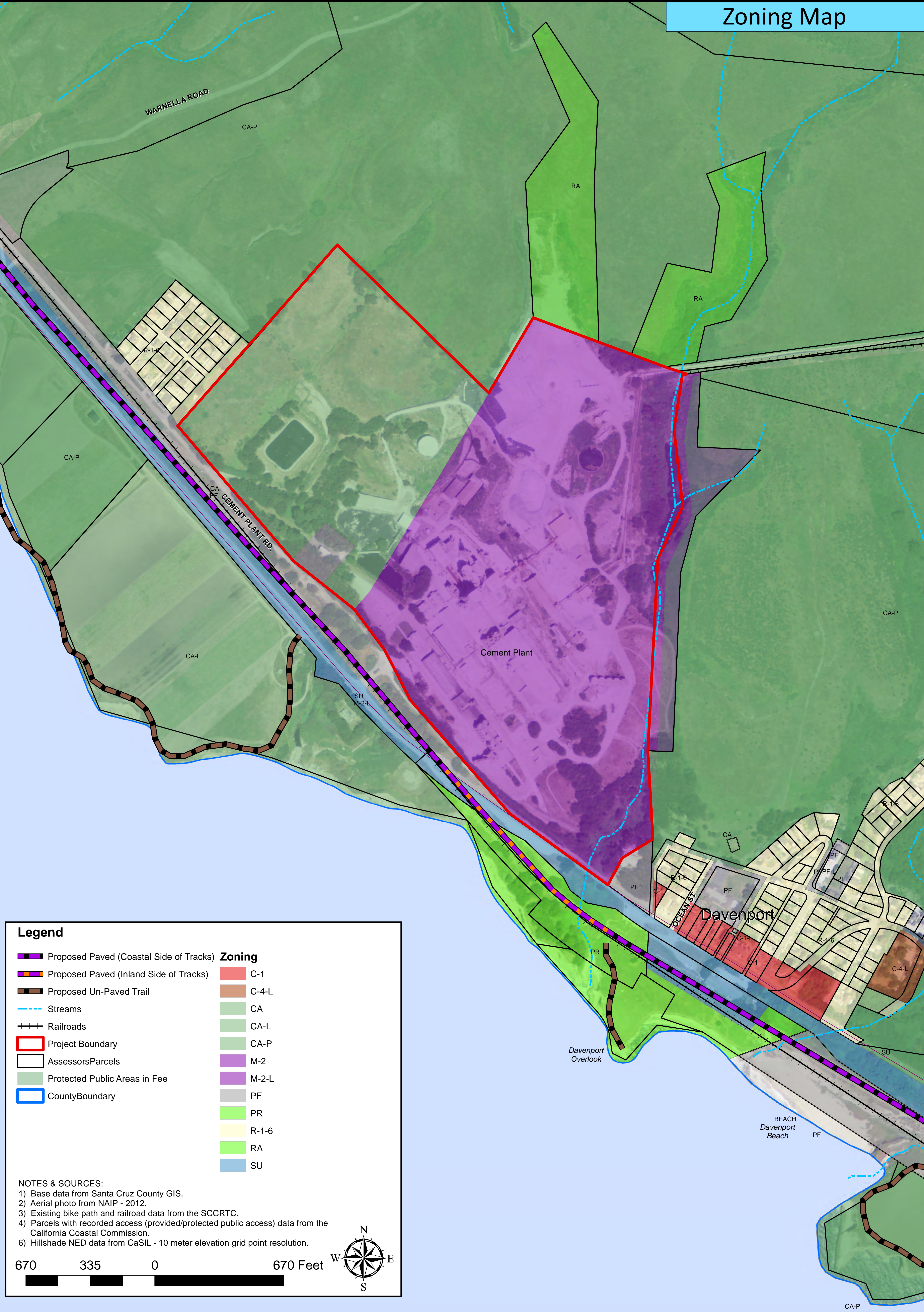


Santa Cruz County Coastal Restoration Reuse Plan

Zoning Map



Legend

- | | |
|--|---------------|
| | Zoning |
| | |
| | |
| | |
| | |
| | |
| | |
| | |
| | |
| | |
| | |
| | |
| | |

NOTES & SOURCES:

- 1) Base data from Santa Cruz County GIS.
- 2) Aerial photo from NAIP - 2012.
- 3) Existing bike path and railroad data from the SCCRTC.
- 4) Parcels with recorded access (provided/protected public access) data from the California Coastal Commission.
- 6) Hillshade NED data from CaSIL - 10 meter elevation grid point resolution.

670 335 0 670 Feet

