



# County of Santa Cruz

## Santa Cruz County Community Corrections Partnership

### MEETING NOTICE AND AGENDA

**October 1, 2024**  
**9:00 – 10:00 a.m.**

**Santa Cruz County Probation Offices – Training Room**  
**303 Water Street, Suite. 9, Santa Cruz, CA 95060**

*The three goals of the Santa Cruz County Community Corrections Partnership are:*

- I. Establish an array of **effective alternatives to incarceration** to address the impacts that the realigned population will have on the county jail in order to avert crowding and poor conditions of confinement without jeopardizing public safety outcomes;*
- II. Implement **Evidence-Based Probation Supervision** that properly assesses risk factors associated with recidivism and provides effective probation interviewing, case planning, and community supervision to ensure public safety and reduce recidivism; and*
- III. Develop community partnerships for **effective intervention services** that adhere to the principles of evidence-based practices for maximum recidivism reduction.*

#### I. CALL TO ORDER

#### II. CONSENT AGENDA:

Approval of Agenda

Approval of Minutes from the May 23, 2024, meeting

#### III. PUBLIC COMMUNICATIONS: Members of the public are allowed 3 minutes to address any item pertaining to the CCP, but not on the agenda.

#### IV. ORAL REPORTS AND ACTION ITEMS

1. Report on FY24-25 Treatment and Intervention Services Contracts and State Funding: Division Director Sarah Fletcher and Chief Probation Officer Fernando Giraldo
2. Report on CAFES Cohort III Program (Proposition 47): Asst. Division Director Hugo Calderon
3. Presentation on the Local Implementation Timeline for the Community Assistance, Recovery, and Empowerment Act (CARE Act): Health Services Agency (HSA) Departmental Communications Officer Sandra Hughes
4. Presentation and Input Session: Developing Countywide Community Public Safety Indicators: County Administrative Office (CAO) Principal Administrative Analyst Sven Stafford
5. Consider Request for Bridge Funding for In-Custody Medically Assisted Treatment (MAT): Santa Cruz County Undersheriff Chris Clark

#### V. ADJOURNMENT

*The County of Santa Cruz does not discriminate on the basis of disability, as no person shall, by reason of a disability, be denied the benefits of its services, programs, or activities. If you are a person with a disability, including a communication disability, and require special assistance in order to participate in the meeting or need language service assistance, please contact the Santa Cruz County Probation Department at (831) 454-3105 (TDD: call 711) at least 72 hours in advance of the meeting in order to make arrangements. Persons with disabilities may request a copy of the agenda in an alternate format.*

*Por favor haga arreglos anticipadamente por teléfono al número (831) 454-3105.*



County of Santa Cruz  
Santa Cruz County Community Corrections Partnership  
MEETING NOTICE AND AGENDA

Thursday, May 23, 2024  
9:00 – 9:45 a.m.

Santa Cruz County Probation Offices – Training Room  
303 Water Street, Suite. 9, Santa Cruz, CA 95060

The three goals of the Santa Cruz County Community Corrections Partnership are:

- I. Establish an array of **effective alternatives to incarceration** to address the impacts that the realigned population will have on the county jail in order to avert crowding and poor conditions of confinement without jeopardizing public safety outcomes;
- II. Implement **Evidence-Based Probation Supervision** that properly assesses risk factors associated with recidivism and provides effective probation interviewing, case planning, and community supervision to ensure public safety and reduce recidivism; and
- III. Develop community partnerships for **effective intervention services** that adhere to the principles of evidence-based practices for maximum recidivism reduction.

I. CALL TO ORDER: Meeting called to order at 9:02 a.m.

District Attorney's Office

Health Services Agency

Sheriff's Office

Probation Department

Public Defender

Superior Court of Santa Cruz

Capitola Police Department

County Office of Education

Health Services Agency

District Attorney's Office

Human Services Department

County Administrator's Office

Human Services Department

Santa Cruz Volunteer Center

Tara George, Chief Deputy District Attorney \*

Monica Morales, Director of Health Services Agency \* (absent)

Jim Hart, Sheriff- Coroner \* (absent)

Fernando Giraldo, Chief Probation Officer \*

Heather Rogers, Public Defender \*

Sasha Morgan, Court Executive Officer \*

Andrew Dally, Chief of Police \*

Faris Sabbah, Superintendent of Schools (absent)

Casey Swank, Chief of Substance Use Disorders Programs

Laura Espindola, Manager of Victim Witness Assistance Program

Kimberly Petersen, Asst. Director of Human Services Department

Nicole Coburn, Assistant CAO

Andrew Stone, Director of Workforce Investment Board (absent)

Karen Delaney, Executive Director

\*Denotes voting member

Proxy: Tara George is proxy for District Attorney Jeff Rosell

Kimberly Petersen is proxy for Director Randy Morris

II. CONSENT AGENDA: Heather Rogers moved to approve the Consent Agenda (Approval of Agenda, Approval of Minutes from the January 11, 2024, meeting); Sasha Morgan seconded.

**Motion Passed**

Yes: Rogers, Morgan, Giraldo, Dally, George

No: None

Abstain: None

Absent: Morales, Hart

The County of Santa Cruz does not discriminate on the basis of disability, as no person shall, by reason of a disability, be denied the benefits of its services, programs, or activities. If you are a person with a disability, including a communication disability, and require special assistance in order to participate in the meeting or need language service assistance, please contact the Santa Cruz County Probation Department at (831) 454-3105 (TDD: call 711) at least 72 hours in advance of the meeting in order to make arrangements. Persons with disabilities may request a copy of the agenda in an alternate format.

Por favor haga arreglos anticipadamente por teléfono al número (831) 454-3105.

III. PUBLIC COMMUNICATIONS: None.

IV. ORAL REPORTS AND ACTION ITEMS:

1. Report on CAFES Cohort III Program (Proposition 47): Assistant Division Director Hugo Calderon shared that the CAFES Cohort 3 Program had a site visit from Board of State and Community Corrections (BSCC) on March 29, 2024. The BSCC Field Representative was pleased with the ease of access across the various components of the grant and the expansion of diversion opportunities as provided by our partners.

Asst. Division Director Calderon also shared that a new Collaborative Court Liaison has been hired. This contracted position through Goodwill will assist expediting Substance Use Disorder (SUD) assessments, casework coordination, and light case management work.

2. Approve Review Panel's Rankings for AB109 Treatment and Intervention Services Request for Proposals – RFP 23P3-014 – (Action Item): Chief Probation Officer Fernando Giraldo

Heather Rogers moved to approve the Review Panel's Rankings for AB109 Treatment and Intervention Services Request for Proposals – RFP 23P3-014; Tara George seconded.

**Motion Passed**

Yes: Rogers, Morgan, Giraldo, Dally, George  
No: None  
Abstain: None  
Absent: Morales, Hart

3. Approve Request for the CCP to Serve as Local Advisory Committee for Proposition 47 Cohort IV Proposal (Action Item): Sr. Behavioral Health Manager – HSA, Casey Swank

Sasha Morgan moved to approve the Community Corrections Partnership (CCP) to Serve as Local Advisory Committee for Proposition 47 Cohort IV Proposal; Heather Rogers seconded.

**Motion Passed**

Yes: Rogers, Morgan, Giraldo, Dally, George  
No: None  
Abstain: None  
Absent: Morales, Hart

4. Report on Sheriff's Sobering Center and Medically Assisted Treatment (MAT) Grant: Sheriff's Office Chief Deputy Daniel Freitas

Amber Williams, Chief Executive Officer of Janus of Santa Cruz reported on the Sobering Center. See attached PowerPoint.

Chief Dan Freitas reported on the Medically Assisted Treatment (MAT) Grant. See attached PowerPoint.

V. ADJOURNMENT: Meeting adjourned at 9:54 a.m.

*The County of Santa Cruz does not discriminate on the basis of disability, as no person shall, by reason of a disability, be denied the benefits of its services, programs, or activities. If you are a person with a disability, including a communication disability, and require special assistance in order to participate in the meeting or need language service assistance, please contact the Santa Cruz County Probation Department at (831) 454-3105 (TDD: call 711) at least 72 hours in advance of the meeting in order to make arrangements. Persons with disabilities may request a copy of the agenda in an alternate format.*

*Por favor haga arreglos anticipadamente por teléfono al número (831) 454-3105.*



# CARE: A Pathway to Hope and Healing

Community Assistance, Recovery and Empowerment in Santa Cruz County





# What is CARE?

The **Community Assistance, Recovery, and Empowerment (CARE) Act** creates a new pathway to deliver mental health and substance use disorder treatment and support services to eligible individuals who have untreated schizophrenia spectrum or other psychotic disorders.

The CARE Act allows the Court to order the County to provide behavioral health treatment in community-based settings.

The individual enters this pathway when a petitioner requests court-ordered treatment, services, supports, and housing resources under the CARE Act, for an eligible individual (or “respondent”).



CARE Act will be available to eligible Santa Cruz County residents starting **December 1, 2024**.



# What CARE is NOT

## CARE is **not** a conservatorship.

- Medications, treatment, and placement cannot be forced.
- The entire process is voluntary.

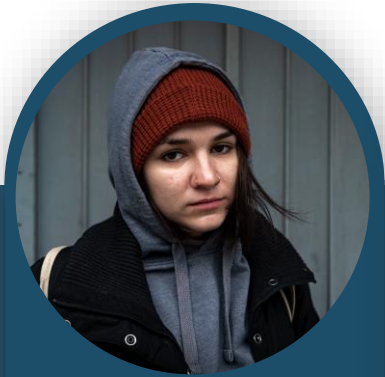
## CARE is **not** a cure for homelessness.

- Housing is not guaranteed.

## CARE is **not** for all people with mental illness.

- The CARE Act addresses only a very specific set of psychotic disorders.

# Overview of CARE Act Roles



**Participant/  
Respondent**



**Petitioner**



**Santa Cruz  
County  
Behavioral  
Health**



**Community  
& Service  
Providers**



**Court  
Partners**



# Respondent

Potential participants/respondents are adults with a diagnosis of Schizophrenia Spectrum or other psychotic disorders who:

- Have severe and persistent symptoms that interfere substantially with primary activities of daily living (ADLs),
- Are unable to maintain functioning,
- Are not stabilized,
- Are either
  - Unlikely to survive safely/independently and the condition is deteriorating OR
  - In need of services and support to prevent further deterioration,
- Are able to participate in a CARE agreement/plan as the least restrictive alternative to ensure their stability, and
- Will likely benefit from the CARE process.

“Respondent” is a legal term to refer to the person participating in the CARE Act Process. You’ll hear this term being used in the court room and potentially other settings.

Respondents will be represented by a lawyer from the Public Defender's Office.

For more information, visit the [CARE Act Eligibility Criteria](#) brief and [Eligibility in Practice](#) training materials.



# CARE Eligible Diagnoses

## Schizophrenia Spectrum Disorders

- Schizophrenia
- Schizoaffective Disorder
- Schizophreniform Disorder
- Other Specified Schizophrenia Spectrum and Other Psychotic Disorder
- Unspecified Schizophrenia Spectrum and Other Psychotic Disorder

## Other Psychotic Disorders

- Brief Psychotic Disorder
- Delusional Disorder
- Schizotypal Personality Disorder
- Substance/Medication Induced Psychotic Disorder
- Catatonia Associated with Another Mental Disorder
- Unspecified Catatonia

## Diagnoses Not Meeting Eligibility\*

- Psychotic Disorder Due to A General Medical Condition
- Catatonia Associated with another Medical Condition
- Major Depression with Psychotic Features
- Bipolar Disorder with psychotic features
- Any Substance Related Disorder not listed above

\*Unless accompanying another eligible diagnoses

# Petitioner

A petitioner could include:

- Family members
  - Limited to a parent, spouse, sibling, child or grandparent
- A mental health professional or other service provider who is treating or has recently treated the client/respondent
- The director of a hospital in which the client/respondent was recently or is hospitalized
- County Behavioral Health agency
- First responders
- Homeless outreach worker
- A roommate/housemate
- The client/respondent

For more information, visit [CARE Act Resources For Petitioners](#).



# Santa Cruz County Behavioral Health

- Agency assigned to engage with the client/respondent as they enter into the different pathways of a CARE agreement
- Behavioral Health (BH) creates an initial report, conducts clinical evaluation, engages the client in the mental health treatment, and connects the client with other services and supports.
- CARE participants will be assigned to a BH coordinator who will ensure that they receive services to support unmet needs, either through the Specialty Mental Health Clinic or through community providers.

For more information, visit the [CARE Act Fact Sheet](#) and [2022 California Welfare and Institutions Code](#).



# Community & Service Providers

- Santa Cruz County has different types of potential housing providers that may engage with CARE Act clients, including but not limited to:
  - Housing First Models, including
    - Bridge/Interim Housing Models
    - Rapid Rehousing
    - Permanent Supportive Housing
  - Behavioral Health Bridge Housing (BHBH) funding

For more information, visit the [CARE Act Fact Sheet](#) and [2022 California Welfare and Institutions Code](#).



# Role of First Responders and Other Professionals

## 1) As the Petitioner:

- Consult with your agency's counsel to complete court forms.  
Note: Self-help centers only assist individuals.
- First responders as petitioners are replaced by County Behavioral Health (BH) at the initial appearance.
- Original petitioner should be present and can make a statement at the initial hearing.

## 2) As a referral source:

- In some cases, you may refer to other organizations:
  - County Behavioral Health
  - Health care, hospitals, or emergency departments
  - Community services providers
- Consider identifying liaisons to support communication.



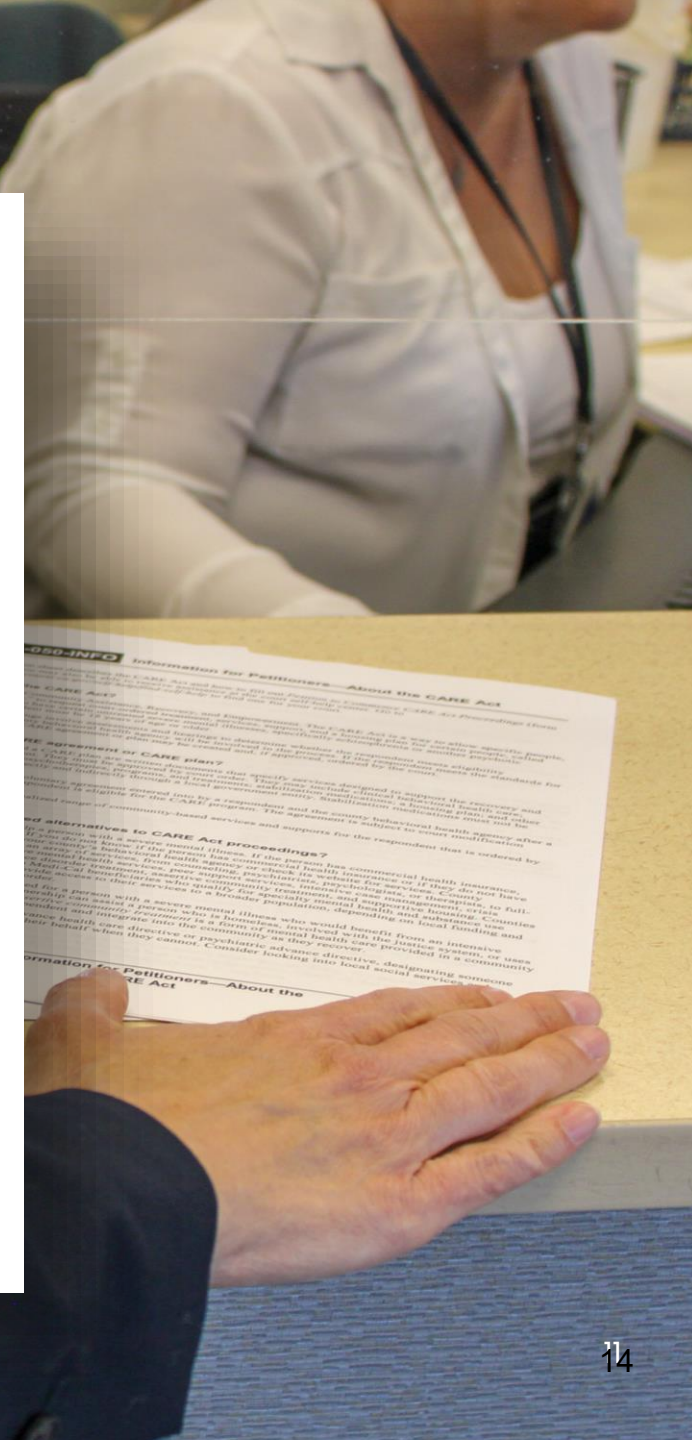
# Key Considerations **Before Filing** a CARE Petition

CARE does **not** apply to people who are already voluntarily engaged in Behavioral Health services.

- Before filing a CARE petition, consider reaching out to Behavioral Health. They can help assess if someone meets the necessary criteria.

Petitions must include documentation of a **qualifying disorder** and one of the following:

- Affidavit of a Behavioral Health clinician OR
- Proof of two recent hospitalizations for intensive treatment (“5250” or “14-day hold”).





# How Does the CARE Process Work?


- 1** The CARE process begins with the filing of a **petition**.  
Petition may be filed by family members, healthcare or social services workers, first responders, or Santa Cruz County Behavioral Health.
- 2** The Court determines **eligibility**.
- 3** If eligible, the Court will work with the participant/respondent and their attorney to create a voluntary **CARE agreement** or a court-ordered CARE plan that connects them with **services**.
- 4** There will be regular status review hearings to **review** progress and challenges.
- 5** After 12 months, the respondent may **graduate** from the program or **continue** for another year.



After graduating from the CARE process, the respondent remains eligible for ongoing treatment, services, and housing to support long-term recovery.

# What's in a CARE Agreement or CARE Plan?

## CARE Agreement/Plan

- Each Participant/respondent will have an individualized CARE Plan specific to their needs.
- Services may include the following:
  -  Behavioral health services
  -  Medically necessary stabilization medications
  -  Housing resources & supports
  -  Funded social services, including those available to indigent California residents

## Additional considerations:

- Respondent and County BH Agency will both be expected to comply.
- Judge can order prioritization of services and supports.
- Services are subject to funding and federal/state laws.

For more information, visit the training [Overview of CARE Agreement & CARE Plan](#) and [California Welfare and Institutions Code \(W&I Code\) section 5982](#).



# How to Learn More about CARE Eligibility



For individuals in our community:

- Contact the **Santa Cruz County Law Library** in Santa Cruz or the **Santa Cruz Superior Court Self Help Center** in Watsonville.
- Both locations provide guidance on CARE eligibility, the CARE process, and support with completing and reviewing the CARE Petition.
- Services can be provided in-person or remotely.
- Visit [lawlibrary.org](http://lawlibrary.org) and [santacruz.courts.ca.gov/self-help](http://santacruz.courts.ca.gov/self-help) for contact information and hours.
- Or call 831-420-2205 (Law Library) or 831-786-7200 option 4 (Self Help Center).

For more information, visit the [CARE Act Fact Sheet](#) and [2022 California Welfare and Institutions Code](#).



# How to File a CARE Petition in Santa Cruz County

## Individuals can visit either:

- Santa Cruz Law Library (basement of 701 Ocean Street, Santa Cruz)
- **or** Watsonville Self Help Center (1 Second Street, Room 301, Watsonville) to:
  - Learn about eligibility
  - Obtain court forms
  - Get help completing and reviewing the forms

## File completed court forms:

- In person in Room 110, Civil Clerk Office (701 Ocean Street)
- **or** Online using efile
- After filing, most respondents will be represented through the Public Defender's office.
- *Remember: CARE is a completely voluntary and confidential process.*



# Court Partners

The following legal partners will help ensure that CARE is legally followed in the best interest of each respondent:

## The Judge:

- Is neutral arbiter and
- Will strive to conduct CARE proceedings in informal, non-adversarial atmosphere.

## County Counsel (attorney):

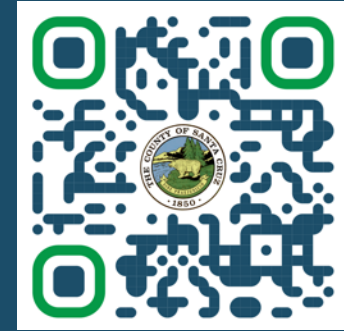
- Will advise and represent County Behavioral Health and
- Ensure that all legal forms & documents are properly filed.

## Public Defender (attorney):

- Is a Court-appointed lawyer, regardless of ability to pay and
- Will represent the Respondent's interests and rights in the courtroom and provide other supportive services.

For more information, visit the [CARE Act Fact Sheet](#) and the [Legal Roles in the CARE Act](#) brief.





[santacruzcountyca.gov/CARE](https://santacruzcountyca.gov/CARE)

## Where Can I Learn More About CARE?

If you think the CARE Act could help someone you care about, find additional information and resources at:

### Santa Cruz County CARE Act:

- Website: [santacruzcountyca.gov/CARE](https://santacruzcountyca.gov/CARE)
- Email: [CAREact@santacruzcountyca.gov](mailto:CAREact@santacruzcountyca.gov)

### Other CARE Act Resources:

- [CARE Act Resource Center](#)
- [Frequently Asked Questions](#)



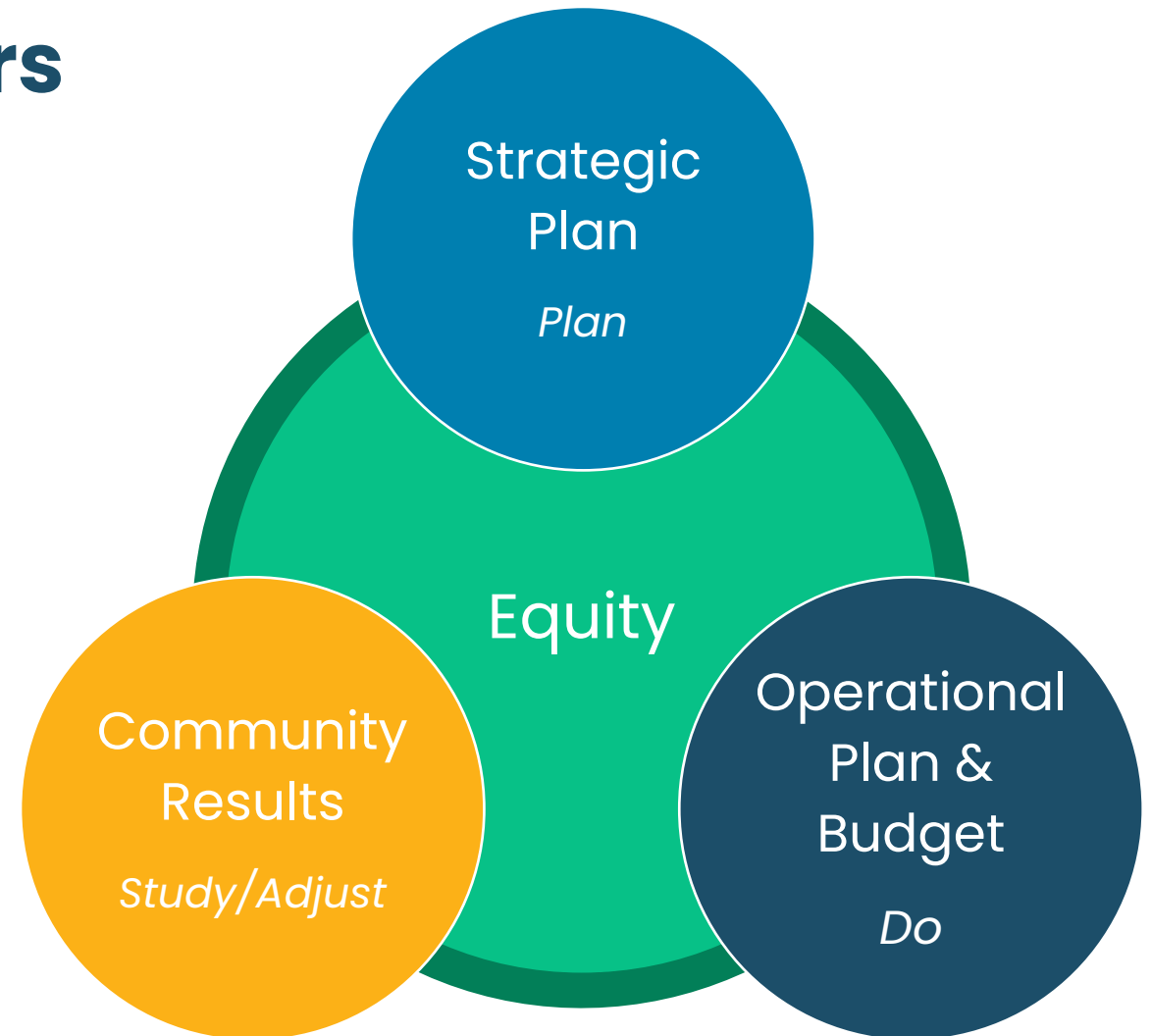
County of Santa Cruz

# Equity in Action: Community Indicators

# Community Indicators

## Desired Results:

- Indicators are part of how we know if we are achieving the County vision and equity statement.
- Indicators are aligned with CORE Conditions of Well-Being
- Indicators are disaggregated by race/ethnicity or geography
- Indicators invite alignment from partners to scale reach and impact.



# County Equity Statement

Equity in action in Santa Cruz County is a transformative process that embraces individuals of every status, providing unwavering support, dignity, and compassion.

Through this commitment, the County ensures intentional opportunities and access, fostering an environment where everyone can thrive and belong.



# Community Indicators



Health & Wellness



Lifelong Learning and Education



Economic Security and Mobility



Thriving Families



Community Connectedness



Healthy Environments



Safe and Just Community

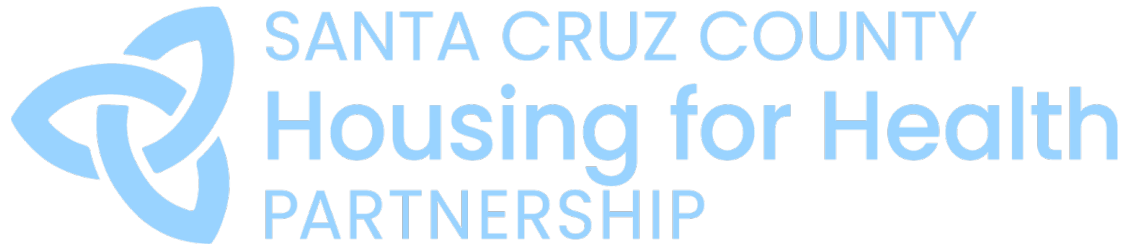


Stable, Affordable Housing and Shelter

Board and Elected Officials

Staff and Community Partners

Data and Inclusive Narratives





# Community Alignment



Health & Wellness



Lifelong Learning and Education



Economic Security and Mobility



Thriving Families



Community Connectedness



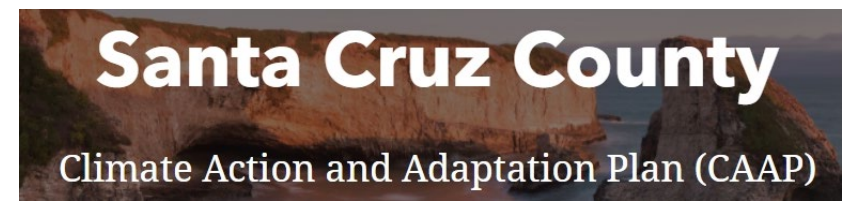
Healthy Environments



Safe and Just Community



Stable, Affordable Housing and Shelter



**SANTA CRUZ**  
COUNTY OFFICE OF  
**EDUCATION**  
DR. FARIS SABBAH • SUPERINTENDENT OF SCHOOLS



# Draft Community Results



Population  
Indicator

How is the entire county doing?

Disaggregated  
Data

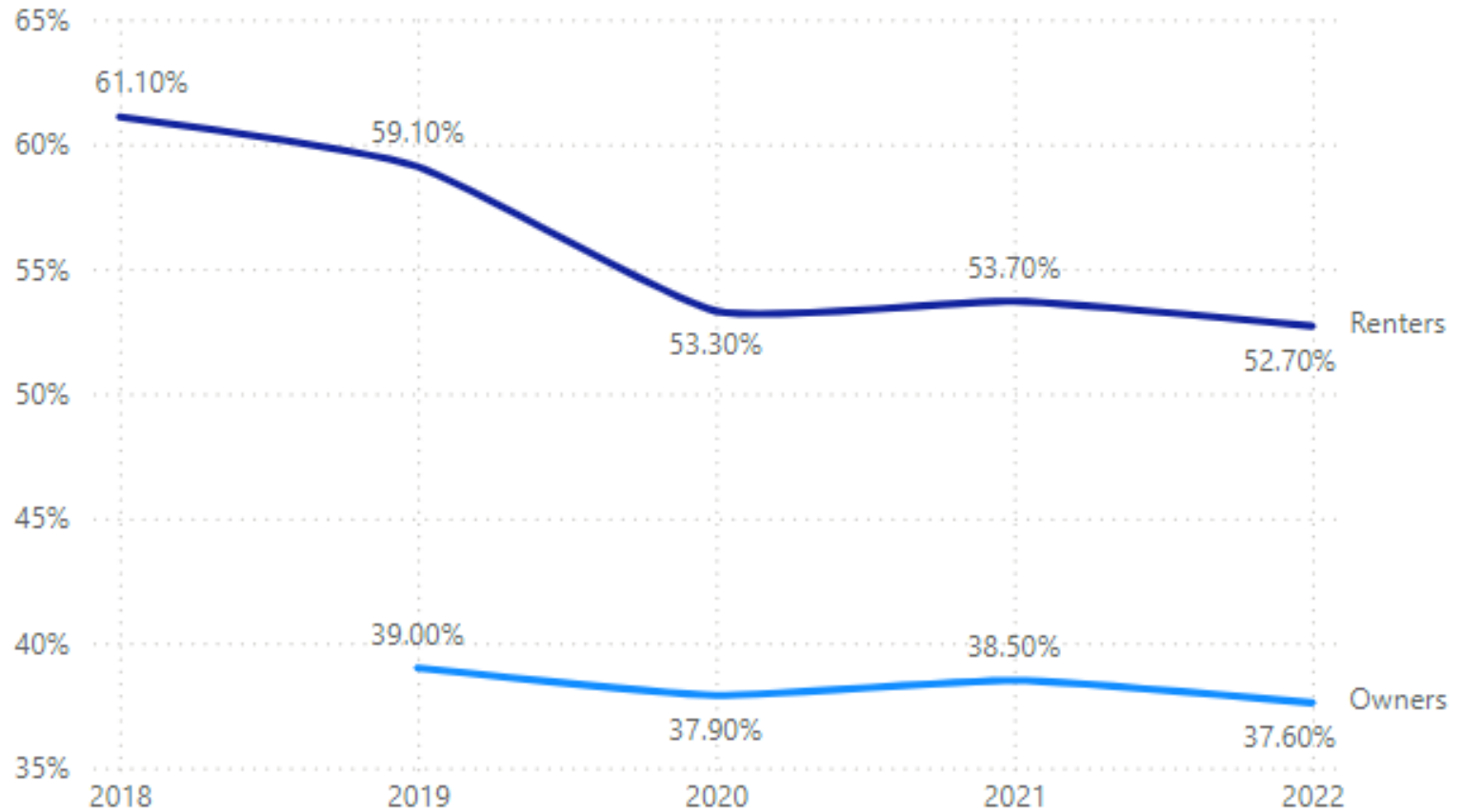
Where does the County need to focus?

Community  
Voice

What is the community saying they need?

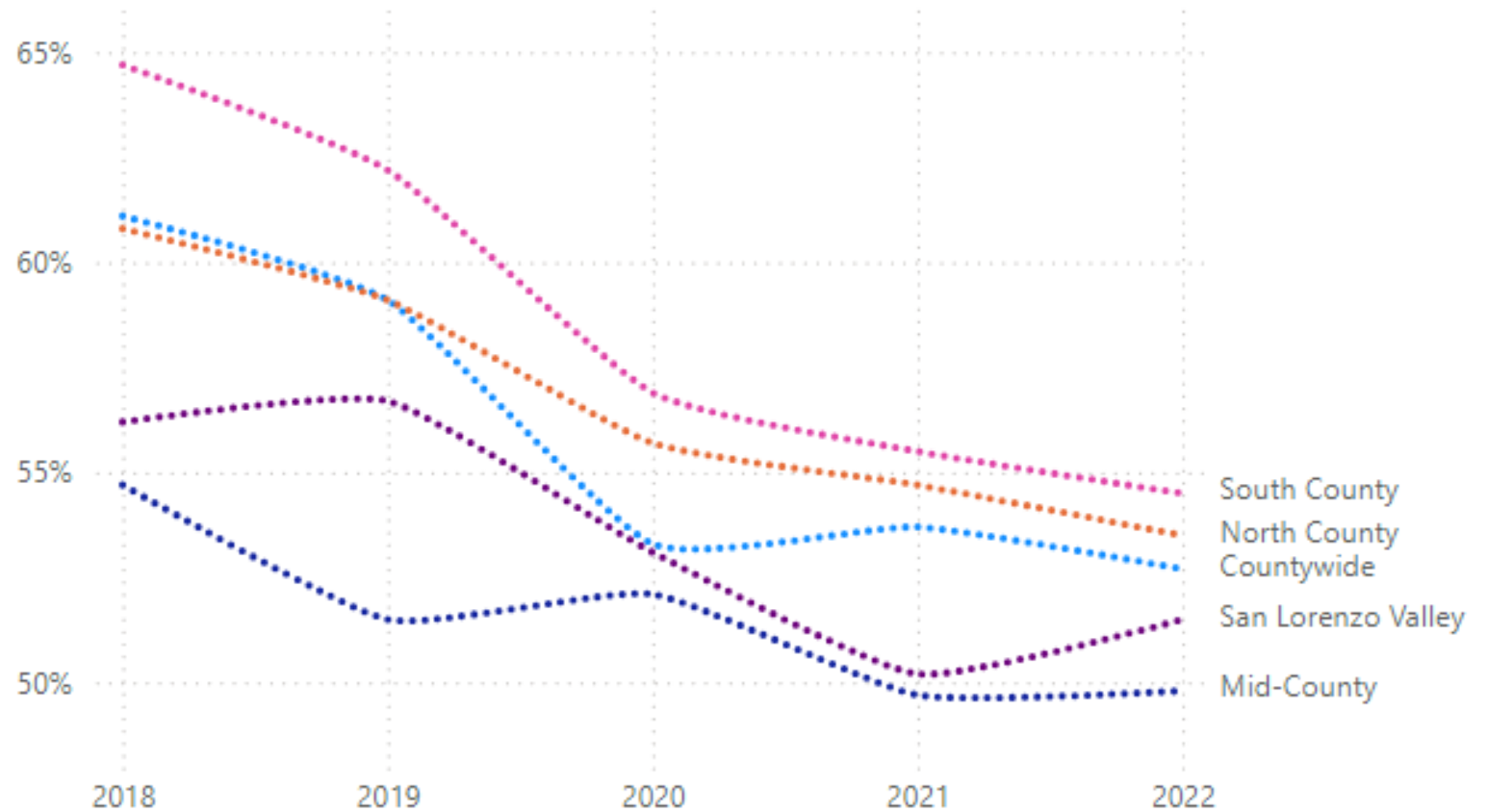
# Population Indicator

Over half of renters in the county spend more than 30% of their income on rent



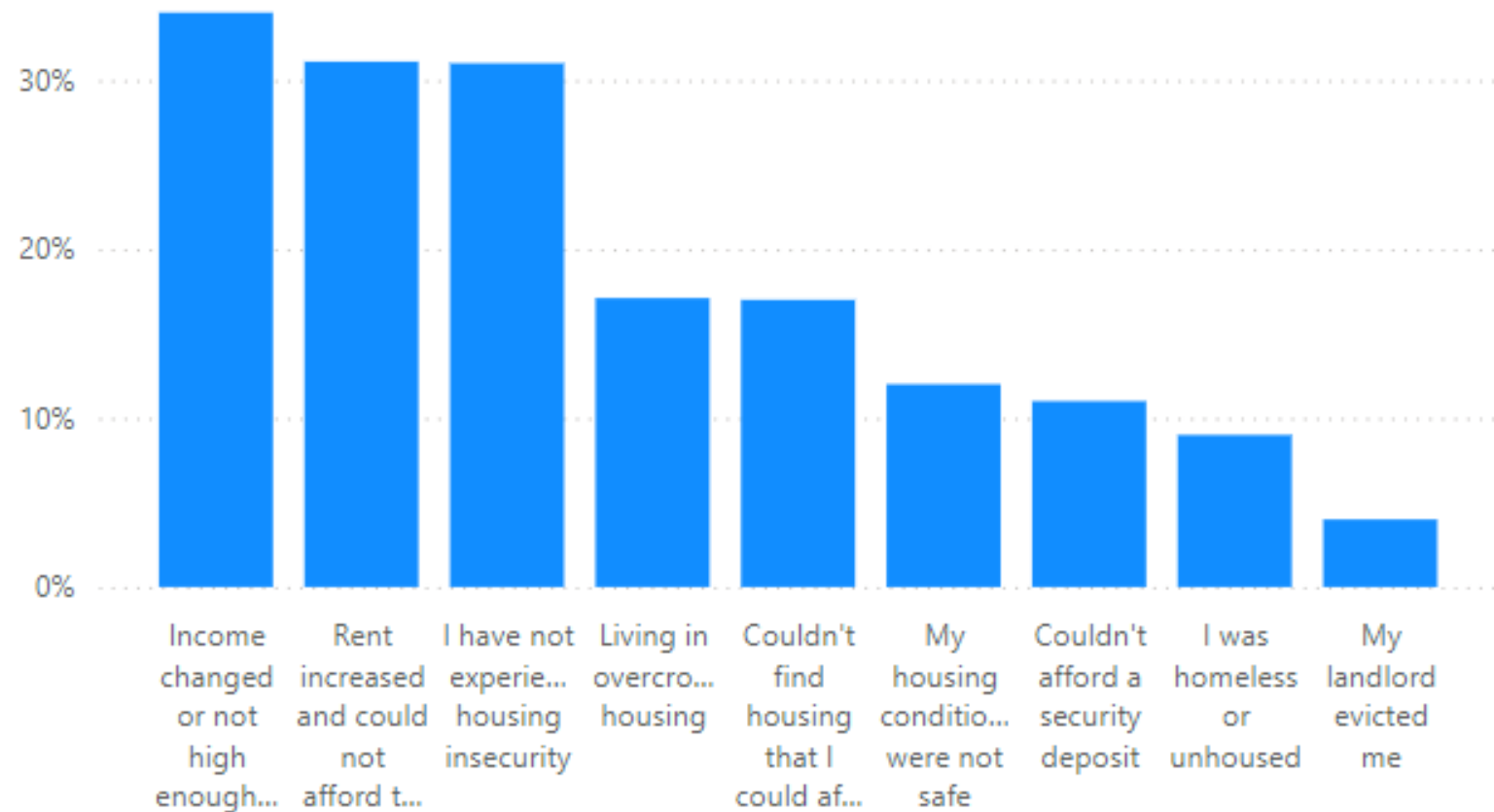
# Disaggregated Data

Rent burden across the county has decreased slightly, primarily driven by reductions in North and South County.



# Community Voice

Housing insecurity is highest among low-income earners who face variable income, rent increases, and overcrowded housing.



# Conversation

- What indicator(s) might the CCP recommend for Safe and Just Community?
- What are the resources and plans that we can guide the public to for more information?

