



Supervisory Redistricting 2021

Santa Cruz County

Advisory Redistricting Commission (ARC21)

Public Workshop

The purpose of these workshops is to inform the public on Santa Cruz County redistricting efforts and gain public input on where district lines should be drawn.

County residents and community members can provide public input at this or future public workshops, in-person or online.

Future public workshops will be held virtually and in-person at the following locations:

Mid-County	North County	South County
Sheriff's Community Room, 5200 Soquel Ave, Live Oak	Felton Branch Library, 6121 Gushee St, Felton	Starlight Elementary, 225 Hammer Dr, Watsonville
September 22, 2021, 6:30 p.m.	September 29, 2021, 6:30 p.m.	September 30, 2021, 6:30 p.m.

What is Redistricting? Why it Matters?



Redrawing District Boundaries

After every decennial census, district boundaries are redrawn so that each district is substantially equal in population.

Electing Representatives

Redistricting determines which neighborhoods and communities are grouped together into a district for purposes of electing a board member.

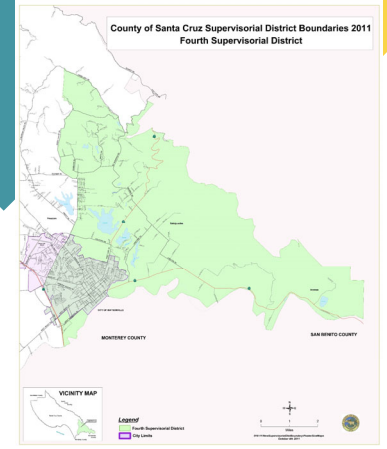
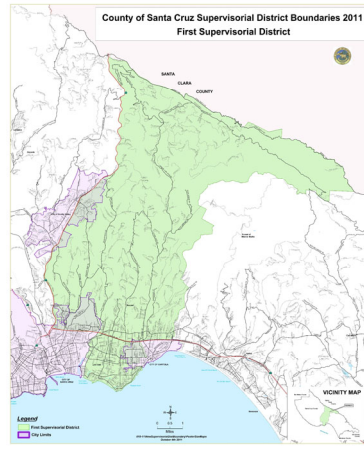
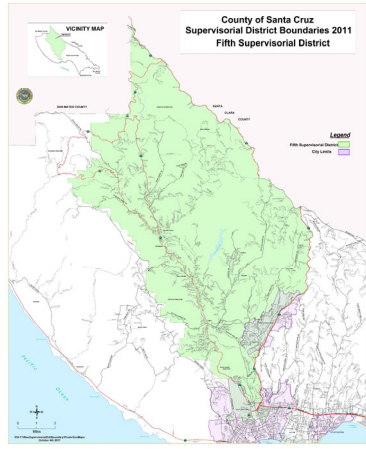
Population Equality

Redistricting is important in ensuring that each board member represents about the same number of constituents.

Your Voice

Redistricting has been used at times to exclude communities from political power. By fully participating in and monitoring the redistricting process, more communities may have a better opportunity to elect candidates of their choice and voice their needs and interest.

Advisory Redistricting Commission



Kris Reyes

Third District

Supervisor Ryan Coonerty

James Mosher

Fifth District

Supervisor
Bruce McPherson

Cheri O'Neil

First District

Supervisor Manu Koenig

Michael Watkins

Second District

Supervisor Zach Friend

Peter Radin

Fourth District

Supervisor Greg Caput



Line Drawing Criteria by Order

Under AB 849 and Election Code 21500, supervisorial districts must be drawn under the following order of priority:

1 – Equal Population

Districts must be of nearly equal population

2 – Voting Rights Act

Districts must comply with the Voting Rights Act to ensure that minorities have an equal opportunity to elect representatives of their choice.

3 – Contiguity

Districts must be drawn contiguously so that all parts of the district are connected to each other.

4 – Communities of Interest

Districts must maintain the geographic integrity of neighborhoods and communities of interest to the extent possible.

5 – Integrity of Cities

To the extent possible, districts must minimize division of cities or census designated places.

6 – Identifiable Boundaries

Boundaries must be easily identifiable and, if possible, bound by natural/artificial barriers, streets, and/or county lines.

7 – Geographical Compactness

Districts must be geographically compact to the extent possible

8 – Political Parties

To the extent possible districts must not favor or discriminate against any political party.

Communities of Interest (COI)

Communities of Interest

- A COI is a concentrated population which shares common social and economic interests that should be included within a single district for purposes of its effective and fair representation.

Defining your Community

- People can belong to multiple COIs. Your community can be defined by the geography, by boundaries, and/or by landmarks.
- What issues do you and your neighbors care about?
- How does influencing the maps help your cause?

Participating in the Process

- Provide public input at meetings and/or submit your comments to the commission.
- Tells us about your COI and map it using the mapping tools on our website.

1. Begin with your street or neighborhood.
2. What are your shared interests?
3. What brings you together?
4. What is important to your community?
5. Are there nearby areas you want to be in a district with?
6. Nearby areas you don't want to be in a district with? Why or why not?
7. Has your community come together to advocate for important services, better schools, roads, or health centers in your neighborhood?

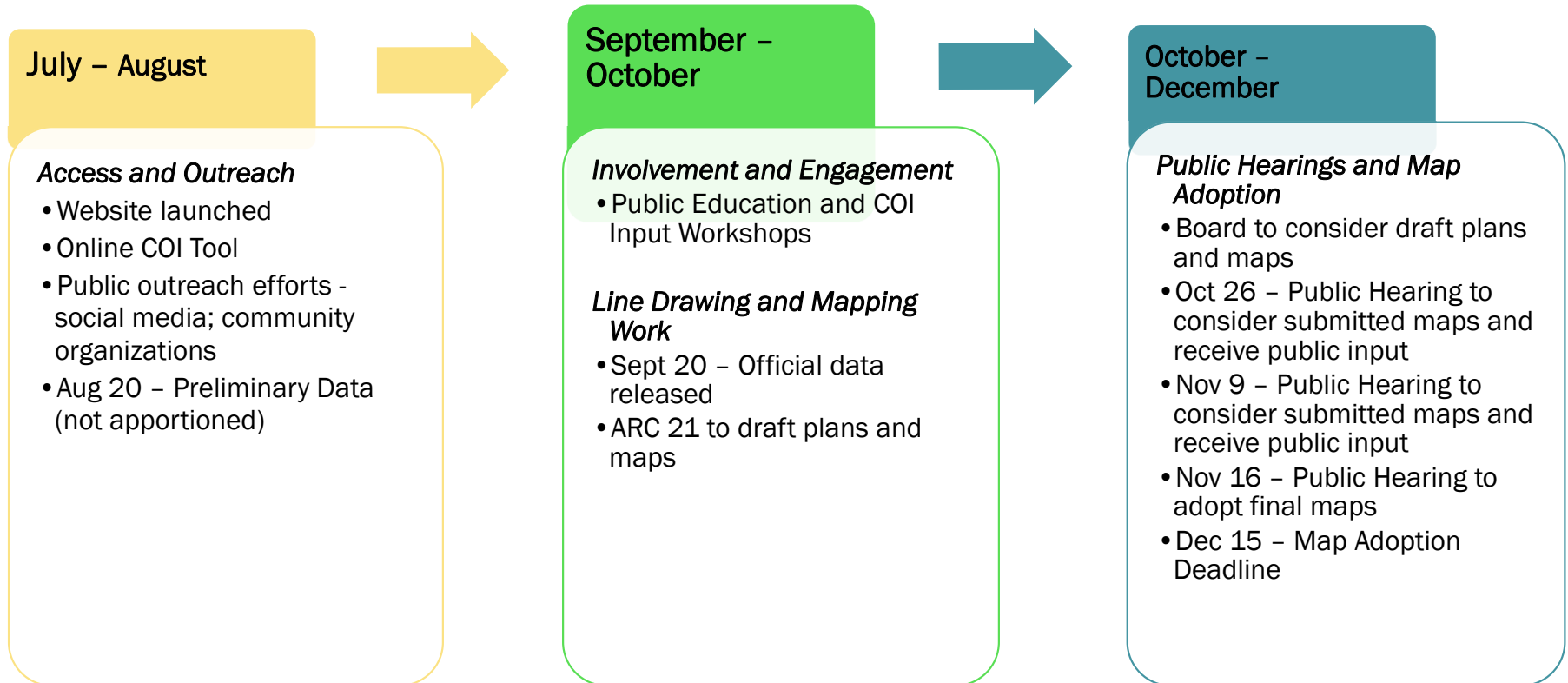


Communities of Interest

What brings you together?

What is important to your community?

Timeline/Phases



Preliminary 2020 Census Data*

*Unapportioned data

District	Population Target	Census Population	Over/(Under) Population Target
1 st	54,172.20	54,047	(125.2)
2 nd	54,172.20	54,637	464.8
3 rd	54,172.20	56,347	2,174.8
4 th	54,172.20	53,733	(439.2)
5 th	54,172.20	52,097	(2,075.2)
County Population		270,861	

Get Involved



Santa Cruz County

[Santacruzcounty.us/Redistricting2021](https://santacruzcounty.us/Redistricting2021)



California

WedrawTheLinesCA.org



Cities and Other Special Districts