

MICHAEL BEATON
DIRECTOR

County of Santa Cruz

GENERAL SERVICES DEPARTMENT

701 OCEAN STREET, SUITE 330, SANTA CRUZ, CA 95060-4073

(831) 454-2210 FAX: (831) 454-2710 TDD/TTY: 711

GSDFACILITIES@SANTACRUZCOUNTY.US



ADDENDUM #2

Rooftop AHU's Removal and Replacement; Project #21TI-036

90 Rountree Lane, Watsonville, CA 95076

April 20, 2022

This addendum (#2) is being issued in response to general inquiries and to provide clarification and correction to the Construction Documents for the above project. These changes are hereby made a part of the Construction Documents to the same extent as though it were originally included therein.

1. **Clarification/Correction:** Attendees of the mandatory "Virtual Pre-Bid Job Walk" post the meeting requested to receive a listing of those who attended.

Response: Unable to generate a listing of those who signed into the meeting Facilities Maintenance & Project Operations recorded a separate attendance register. Reference "**Exhibit A**" attached to this Addendum.

2. **Clarification/Correction:** During the Virtual Pre-Bid Job Walk" some errors and some clarifications were made to the presentation content. Will that updated Power Point be reissued to those who participated?

Response: The Power Point used in the Virtual Pre-Bid Job Walk has been revised to reflect discussions during the meeting. Please reference "**Exhibit B**" attached.

3. **Clarification/Correction:** During the Virtual Pre-Bid Job Walk some questions were asked by the contractors in attendance. Those questions asked are noted below in the Response section for clarification.

Question #01 from Matthew Woolson with Environmental Systems, Inc.; "How early can the crew arrive?"

Response: Start Time can be as early as 6:00am despite this being a 24/7 Facility. Shutdown Time will be 3:30pm.

Question #02 from Matthew Woolson with Environmental Systems, Inc.; "Are there COVID restrictions?"

Response: Despite having a vaccination card all crew members must daily be tested by the onsite Nurse prior to entering and being escorted to the work area.



Question #03 from Matthew Woolson with Environmental Systems, Inc.; Will the County provide the crane to off load the delivered AHU's?

Response: The Contractor will be held responsible for the crane services for the entire project.

Question #04 from Jack Irwin with Geo H. Wilson; "Will the Bidder be a single prime for this project? "

Response: Yes, the Bidder will be considered a single prime contractor responsible for ALL scopes of work to include electrical scopes of work.

4. **Clarification/Correction:** The successful Bidder shall have all assigned crew members to this project shall complete the Correctional Access Application Form and immediately submit for clearance to enter and work inside the Correctional Facility.

Response: Reference "**Exhibit C**" for the access application form.

Engineer's Estimate: The engineer's estimate remains at: \$150,725
Bid Submittal: Bids are due at 2:30 PM on May 5, 2022.

PLEASE NOTE: Acknowledgment of receipt of this addendum is required on the bid schedule, page 3 of your bid packet.

Please e-mail Payson.McNett@santacruzcounty.us , GSD Senior Building Equipment Mechanic and Conrado.Montes@santacruzcounty.us , Building Project Construction Manager with any questions regarding these specification changes.



ADDENDUM #2
Project #21TI-036
Rooftop AHU's Removal and Replacement
90 Rountree Lane, Watsonville, CA 95076
April 20, 2022

Addendum #2 authorization:

A handwritten signature in blue ink, appearing to read "Thomas Fakner".

04/20/2022

Thomas Fakner CCM – Deputy Director, Facilities

Date

cc: Justine Leonard, GSD Office Assistant III
Shannon Gannon, GSD Building Maintenance Worker III and Assistant Construction Manager

Project File #21TI-036



EXHIBIT "A"

ATTENDEE SIGN-IN SHEET



County of Santa Cruz
GENERAL SERVICES DEPARTMENT
GENERAL AND EMERGENCY SERVICES
701 OCEAN STREET, SUITE 330, SANTA CRUZ, CA 95060-4073

SIGN-IN SHEET
PROGRESS
MEETING PROJECT
21TI-036

| CONTACT NAME & COMPANY | CONTACT EMAIL | CONTACT PHONE # |
|---|----------------------|----------------------------|
| TJ Kay with ESI | | |
| Matt Woolman with ESI | | |
| Lee Barcelos with S&H Construction | | |
| Ian Barcelos with S&H Construction | | |
| Jack Irwin with George Wilson Contracting | | |
| Laura Rohen with George Wilson Contracting | | |
| Payson McNett with Facilities Maintenance & Project Operations | | |
| Thomas J Fakner with Facilities Maintenance & Project Operations | | |
| Victoria Walker with GSD | | |
| Carol Johnson with GSD | | |

Project: 21TI-036 AHU's Replacement "In Like Kind"

Facility: 90 Rountree Lane Watsonville, CA



EXHIBIT “B”

REVISED POWER POINT PRESENTATION

PROJECT 21TI-036

VIRTUAL PRE-BID JOB INTRODUCTION

ADDENDUM #02



County of Santa Cruz

GENERAL SERVICES DEPARTMENT

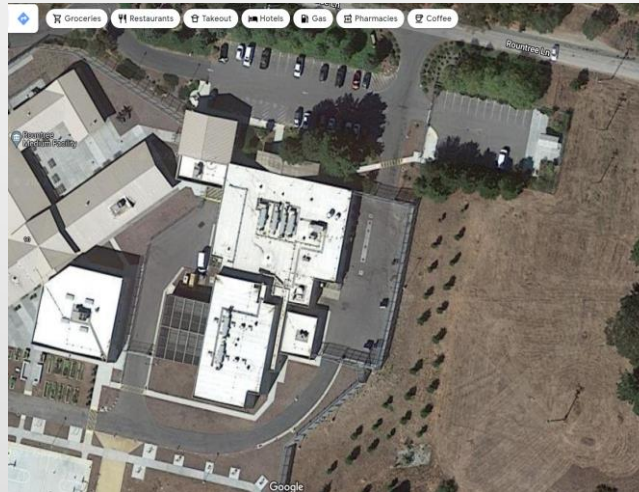
FACILITIES MAINTENANCE & PROJECT OPERATIONS

1110 EMELINE AVENUE, SANTA CRUZ, CA 95060-4073

PROJECT 21TI-036

TABLE OF CONTENTS

1. Introduction & Purpose
2. Project Summary
3. Supplemental Instructions
4. Bid Requirements
5. Q & A



County of Santa Cruz

GENERAL SERVICES DEPARTMENT

FACILITIS MAINTENANCE & PROJECT OPERATIONS

1110 EMELINE AVENUE, SANTA CRUZ, CA 95060-4073

PROJECT 21TI-036

INTRODUCTION & PURPOSE

INTRODUCTION

The County of Santa Cruz in Partnership with the County Sheriff's Office and Board of Supervisors have developed a full set of engineered drawings and technical specifications in support of Project 21TI-036. This project is being Bid under CUPCAA guidelines for Informal Bidding. This facility is a Medium Security Prison located at 90 Rountree Lane in Watsonville, CA. Air Handling Units (AHU's) currently provide heating for POD's "R" and "S". Most of the scope of work will be done from the roof top. Adequate access and staging area is available. Delivery of the equipment departs Florida on June 26, 2022 and is estimated to arrive July 05, 2022.

PURPOSE

AHU's have serviced the Facility for more than 30yrs. The Units and controls have struggled for many years. One POD mechanical AHU has failed. The other is near failure. This project addresses the need by replacing AHU's with the ability to heat and cool the space and manage the conditioning remotely through an enhanced controls system.



County of Santa Cruz

GENERAL SERVICES DEPARTMENT

FACILITIES MAINTENANCE & PROJECT OPERATIONS

1110 EMELINE AVENUE, SANTA CRUZ, CA 95060-4073

PROJECT 21TI-036

PROJECT SUMMARY

1. Listing of Bid Documents
2. Approach Strategy
3. Project Highlights
4. Existing Condition Photographs
5. Preliminary Schedule



County of Santa Cruz

GENERAL SERVICES DEPARTMENT

FACILITIES MAINTENANCE & PROJECT OPERATIONS

1110 EMELINE AVENUE, SANTA CRUZ, CA 95060-4073

PROJECT 21TI-036

PROJECT SUMMARY

LISTING OF BID DOCUMENTS

1. County Bid Package Volume I through Volume III
2. Engineered Drawings & Technical Specifications
3. Supplemental Conditions
4. Scope of Work
5. Preliminary Project Schedule
6. Sample Progress Payment Application
7. Sample of Payment & Performance Bonds
8. Facility 1990 Mechanical “As Build” Drawings
9. OFCI Equipment Engineering Performance Specifications
10. Engineering Report on (E) Mechanical Equipment Dated 07.22.21
11. Power Point Presentation - Virtual Pre-Bid Job Walk



County of Santa Cruz

GENERAL SERVICES DEPARTMENT

FACILITIES MAINTENANCE & PROJECT OPERATIONS

1110 EMELINE AVENUE, SANTA CRUZ, CA 95060-4073

PROJECT 21TI-036

PROJECT SUMMARY

APPROACH STRATEGY

While the contracted strategy of the successful Bidder is not owned by the County, to develop the project documents and derive a logical cost model the County and Design Team adopted an “Approach Strategy” to achieve the project object.

To discuss that strategy Payson McNett, Senior Building Equipment Mechanic for the County Facilities Maintenance & Project Operations Division will share that pathway.



County of Santa Cruz

GENERAL SERVICES DEPARTMENT

FACILITIES MAINTENANCE & PROJECT OPERATIONS

1110 EMELINE AVENUE, SANTA CRUZ, CA 95060-4073

PROJECT 21TI-036

PROJECT SUMMARY

PROJECT HIGHLIGHTS

1. Site access is simple and illustrated on Exhibit “A”
2. (E) AHU’s are rooftop mounted - Reference Exhibit “B”
3. Engineered drawings reflect existing and proposed conditions
4. Technical Specifications are included on the drawings and not separate set of specifications
5. Drawings include “Construction” and “Demolition” notes
6. Electrical Specifications are on plan sheet E6.1
7. Mechanical Specifications are on plan sheet M0.1
8. Bid communicated “Supplemental & Special Conditions” are in Volume II



County of Santa Cruz

GENERAL SERVICES DEPARTMENT

FACILITIS MAINTENANCE & PROJECT OPERATIONS

1110 EMELINE AVENUE, SANTA CRUZ, CA 95060-4073

PROJECT 21TI-036

PROJECT SUMMARY

PROJECT HIGHLIGHTS

9. Scope of Work can be read in Volume II
10. 1990 Mechanical “As-Build” drawings were used to derive this Projects engineered drawings
11. Recommend reading Axiom Engineers “Facility Study” found in Volume II demonstrating the poor condition of these (E) AHU’s
12. AHU’s shall be included in the E-Power Grid
13. A new electrical panel BH will be included in the project
14. New AHU’s are performance criteria are provided in Volume II by Carrier iAIRE Heat Pumps with Hot Water Coils designated as Unit UPC-TC14
15. Addendum #01



County of Santa Cruz

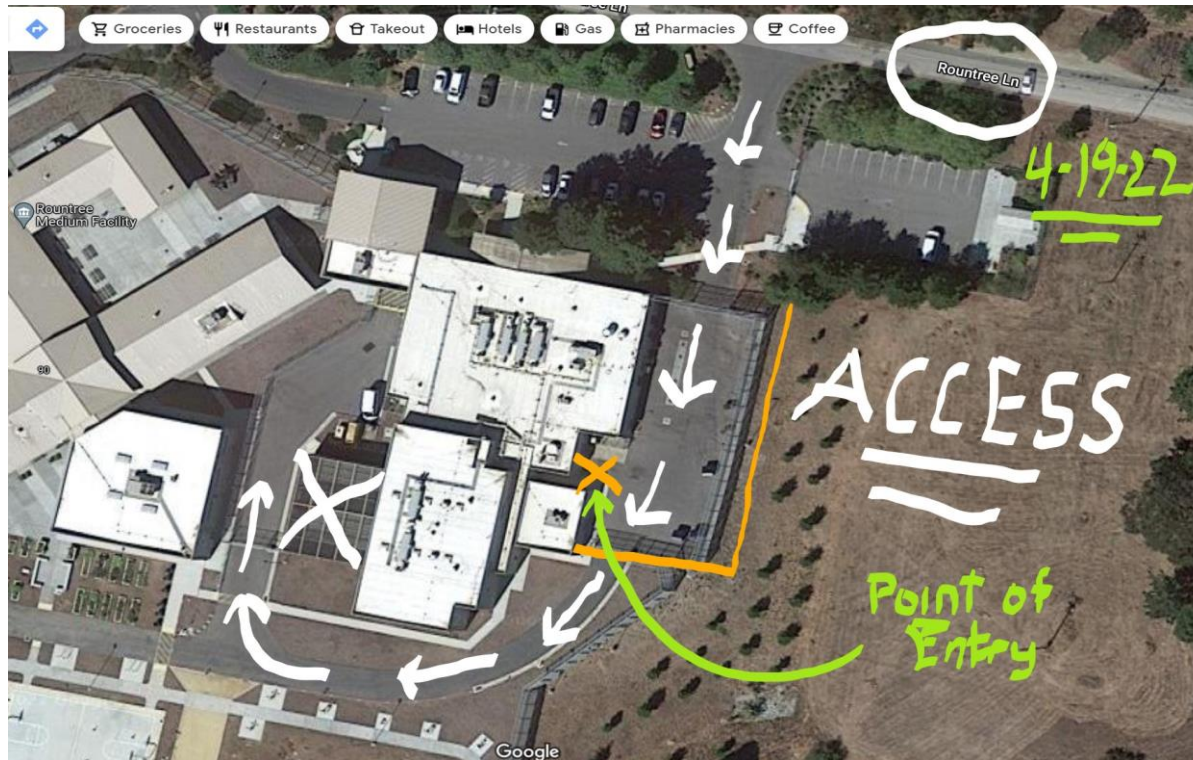
GENERAL SERVICES DEPARTMENT

FACILITIS MAINTENANCE & PROJECT OPERATIONS

1110 EMELINE AVENUE, SANTA CRUZ, CA 95060-4073

PROJECT 21TI-036 PROJECT SUMMARY

EXHIBIT “A”



County of Santa Cruz

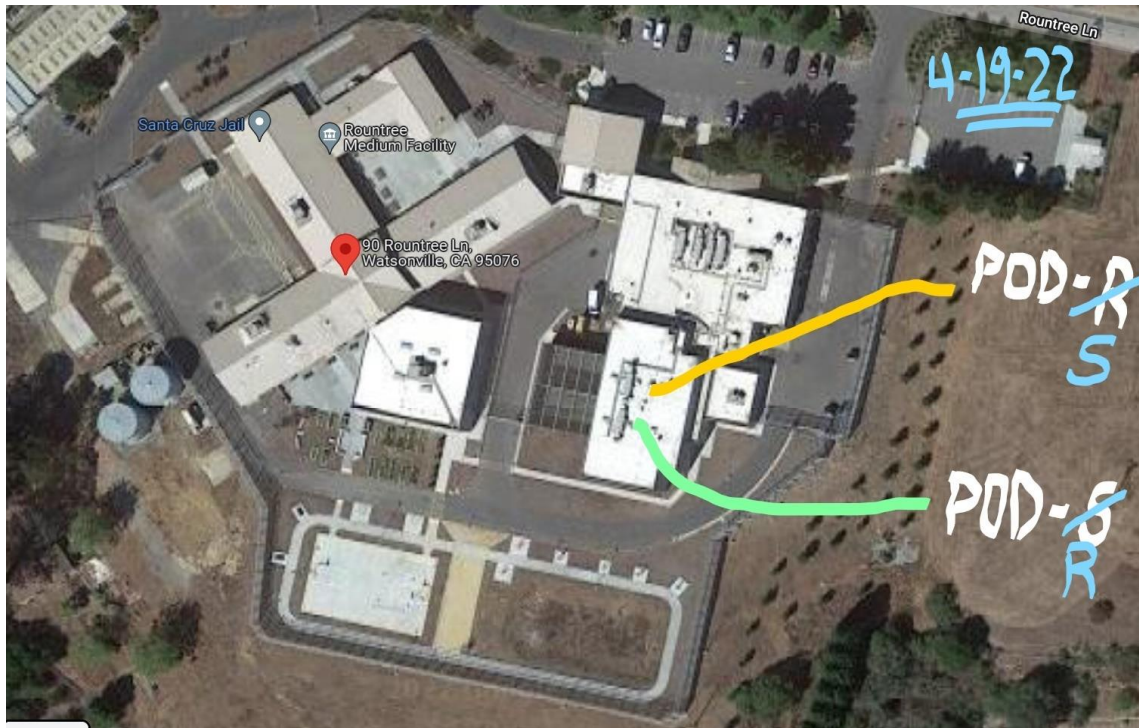
GENERAL SERVICES DEPARTMENT

FACILITIES MAINTENANCE & PROJECT OPERATIONS

1110 EMELINE AVENUE, SANTA CRUZ, CA 95060-4073

PROJECT 21TI-036 PROJECT SUMMARY

EXHIBIT “B”



County of Santa Cruz

GENERAL SERVICES DEPARTMENT

FACILITIES MAINTENANCE & PROJECT OPERATIONS

1110 EMELINE AVENUE, SANTA CRUZ, CA 95060-4073

PROJECT 21TI-036 PROJECT SUMMARY

EXISTING CONDITION PHOTOGRAPHS ”



PROJECT 21TI-036 PROJECT SUMMARY

EXISTING CONDITION PHOTOGRAPHS ”



PROJECT 21TI-036

PROJECT SUMMARY

EXISTING CONDITION PHOTOGRAPHS ”



PROJECT 21TI-036

PROJECT SUMMARY

PRELIMINARY SCHEDULE

Released Bid documents contained a “Preliminary Schedule” under Volume II Exhibit “F”. Addendum #01 provides a revised “Preliminary Schedule” to reflect the equipment manufacturers delivery date push. Highlights from the schedule are as follows:

- Bid Submission 05/05/22
- Bidder Contract Development 05/10/22 to 05/23/22
- Notice to Proceed 06/16/22 (Does Not Require Board Approval)
- Mobilization 06/29/22 (Likely will be middle June - Board Approval Unnecessary)
- OFCI Equipment Arrival 07/05/22
- Construction Start 07/06/22
- Execution Phase Duration 60 Working Days



County of Santa Cruz

GENERAL SERVICES DEPARTMENT

FACILITIS MAINTENANCE & PROJECT OPERATIONS

1110 EMELINE AVENUE, SANTA CRUZ, CA 95060-4073

PROJECT 21TI-036

SUPPLEMENTAL INSTRUCTIONS

Working in or around a Correctional Facility does have its share of unique challenges. So, to provide as much clarity as possible for the Bidder the following is a list of “Supplemental Instructions” that add to Bid documents “Supplemental & Special Conditions”:

- Automatic Controls will integrate the old system with new Delta controls - drawings reflect this scope
- The engineering of this project also considered a project currently in engineering design to replace domestic and mechanical system boilers
- Both projects have Axiom Engineers as the Engineer of Record (EOR)



County of Santa Cruz

GENERAL SERVICES DEPARTMENT

FACILITIES MAINTENANCE & PROJECT OPERATIONS

1110 EMELINE AVENUE, SANTA CRUZ, CA 95060-4073

PROJECT 21TI-036

SUPPLEMENTAL INSTRUCTIONS

- The new system will have its limits of Air Balancing during commissioning & start-up
- The electrical system of each POD will be upgraded to 480v
- The Contractor is responsible for securing the crane to lift the delivered AHU's off the truck and on to the roof
- Successful Bidder is required to have each assigned Worker complete and submit the Facility "Access Application" to acquire clearance
- In Closeout the O&M Documents must delineate Warranty on the OFCI Equipment - Equipment warranty is by the Manufacturer and Labor is by the successful Bidder (Contractor) - When an issue arises the Manufacturer will be contacted as well as the Contractor to open collaborative discussion to resolve the issue - Each will submit assessment reports to the County



County of Santa Cruz

GENERAL SERVICES DEPARTMENT

FACILITIES MAINTENANCE & PROJECT OPERATIONS

1110 EMELINE AVENUE, SANTA CRUZ, CA 95060-4073

PROJECT 21TI-036

BID REQUIREMENTS

- Reference Volume III for full disclosure of requirements
- Bidder has from 04/15/22 through 04/21/22 to submit Pre-Bid RFI's
- Bidder must note receipt of all Addenda issued for this Bid Package
- A Bid Bond is required
- Post Bid a Notice of Award will be issued to the apparent "Lowest Responsive Bidder" and a listing of required documents noted for the Bidder (Contractor) to submit
- Contractor is required to submit a 100% Payment and Performance Bond



County of Santa Cruz

GENERAL SERVICES DEPARTMENT

FACILITIES MAINTENANCE & PROJECT OPERATIONS

1110 EMELINE AVENUE, SANTA CRUZ, CA 95060-4073

PROJECT 21TI-036

BID REQUIREMENTS

- An Independent Contracting Agreement (ICA) is required to be fully executed between the County and Contractor
- One set of Project drawings will be provided to the Contractor
- Contractor **MUST** derive and submit for review and acceptance a construction Baseline Schedule
- During the Contract Development prior from 05/10/22 to 05/23/22 the Contractor **MUST** obtain from Facilities Maintenance & Project Operations the Correction Access Application for submission for each assigned Worker
- **Assume 3 picks with a Crane in Bid**



County of Santa Cruz

GENERAL SERVICES DEPARTMENT

FACILITIES MAINTENANCE & PROJECT OPERATIONS

1110 EMELINE AVENUE, SANTA CRUZ, CA 95060-4073

PROJECT 21TI-036
Q & A

Questions & Answers



County of Santa Cruz

GENERAL SERVICES DEPARTMENT

FACILITIES MAINTENANCE & PROJECT OPERATIONS

1110 EMELINE AVENUE, SANTA CRUZ, CA 95060-4073



EXHIBIT “C”

CORRECTIONS ACCESS APPLICATION



SANTA CRUZ COUNTY SHERIFF'S OFFICE
CORRECTIONAL FACILITY ACCESS APPLICATION & AGREEMENT

☐ NEW
☐ RENEWAL

INSTRUCTIONS FOR COMPLETING AND SUBMITTING APPLICATION

- 1) Complete application in full and be sure to print legibly.
- 2) Attach a copy of government issued ID to application (matriculas are not accepted).
- 3) Your supervisor (person sending you to the jail) must submit your completed application (if applicable).
- 4) Completed application must be filed at least 5 business days before jail access is needed.

Completed applications must be submitted via e-mail to: SHF.JailReceptionMB@santacruzcounty.us

APPLICANT: PERSONAL INFORMATION

Last Name: _____ First Name: _____ MI: _____ DOB: _____ (MM/DD/YY)

Government Issued Identification #: _____

Residence Address: _____ City: _____ State: _____ Zip: _____

Home Phone: _____ Cell Phone: _____ Email: _____

Have you been arrested in the past 5 years? ☐ NO ☐ YES (If YES, list date and circumstances of arrest on the line below)

Are you on probation, parole or PRCS? ☐ NO ☐ YES (If YES, list status of probation/parole/PRCS on the line below)

APPLICANT: PLEASE READ AND SIGN BELOW

I understand that Corrections Access is granted to conduct professional related matters only. I understand that I am not to use Corrections Access to have contact with incarcerated friends or family members. Any contact I have with an incarcerated friend or family member must be in accordance with standard inmate visiting rules and protocols separate from this agreement.

I authorize the Sheriff's Office to complete a full criminal history check and any applicable background investigation in order to obtain and maintain authorization to access the secured portion of the correctional facilities. I verify that the information provided on this form is true and accurate. I understand that failure to provide true and accurate information can result in disqualification.

I understand that any misconduct or violation of Sheriff's Office facility rules, or failure to comply with the directions of Sheriff's Office personnel could result in my immediate removal from Sheriff's Office facilities, denial of future access, and/or arrest and prosecution.

I agree to update the information on this application as needed. I understand that this application will expire a year from the date approved. I understand that I must submit a completed Corrections Access Application and copy of government issued identification prior to my clearance expiration date to avoid facility access interruption.

Applicant Signature: _____ Date: _____

PURPOSE FOR CORRECTIONS ACCESS REQUEST

Business/Organization: _____

Supervisor's Name: _____ Email: _____ Phone: _____

What service is your employee providing to the jail? _____

Who is your jail contact? _____

Supervisor Signature _____ Date _____

FOR OFFICIAL USE ONLY

(Update 3.6.20)

Category/Type: _____ Facility Supervisor: _____ Date: _____

Background Check:

| | | | | | | | | |
|------------------|-----|----|--------------------------|-----|----|-----------|-----|----|
| DMV CURRENT | YES | NO | FELONIES (LAST 5 YRS) | YES | NO | PROBATION | YES | NO |
| CRIMINAL HISTORY | YES | NO | MISDEMEANOR (LAST 5 YRS) | YES | NO | PAROLE | YES | NO |
| OTHER _____ | | | WARRANTS | YES | NO | PRCS | YES | NO |

Completed By: _____ Date: _____ ☐ JMS PROFILE CREATED / UPDATED ☐ ENTERED APP LOG

☐ Access Approved ☐ Access Denied Facility Commander Signature: _____ Date: _____

☐ JMS ACCESS UPDATED ☐ APP LOG UPDATED ☐ APP SCANNED EXP DATE: _____ OA III: _____ Date: _____



County of Santa Cruz

Sheriff-Coroner Corrections Bureau
259 Water St, Santa Cruz, CA 95060
(831) 454-2852 FAX: (831) 454-2884

Jim Hart
Sheriff-Coroner

Liability Waiver

I am aware of the nature and risks associated with performing services in correctional facilities, including the County Jail, and I agree to take due caution in performing services in Santa Cruz County correctional facilities. In exchange for being allowed to perform services in Santa Cruz County correctional facilities, I agree to release and hold harmless the Santa Cruz County Sheriff, the County of Santa Cruz, and their officers, agents, employees, and volunteers from any claim for personal injuries or damage to property that I, or anyone claiming under me or on my behalf, may incur that arises from or relates to my services, to the full extent allowed under California law. I further agree to indemnify, hold harmless, and defend the Santa Cruz County Sheriff, the County of Santa Cruz, and their officers, agents, employees, and volunteers from any and all claims, demands, actions, judgments, costs, attorney's fees, and damages of any kind for liability which they may incur that arises from or relates to my own negligence or willful misconduct associated with my services at the County Jail, to the full extent allowed under California law.

Organization/Program: _____

Printed Name: _____

Signature: _____

Date: _____

****Attach a copy of your Government Issued ID****