



# COUNTY CURRENTS

Santa Cruz County

[www.santacruzcounty.us](http://www.santacruzcounty.us)

Fall 2017

A publication of the County Administrative Office Carlos J. Palacios, County Administrator



## Building Bridges



In August, residents along Valencia Road and in surrounding neighborhoods, as well as Valencia Elementary School students and faculty, celebrated the opening of a temporary bridge along Valencia Road. To stay in touch with winter storm repairs, [like us on Facebook](#).



*Pedestrians cross the new bridge. At right, Supervisor Zach Friend addresses a crowd of 100 neighbors celebrating the bridge's opening.*



The [Santa Cruz County Agricultural Department](#) released its 2016 Crop Report in September. The report showed crop values at \$637,332,000, a 1.9 percent increase over 2015. Strawberries are still king, but grapes and apples had good years.

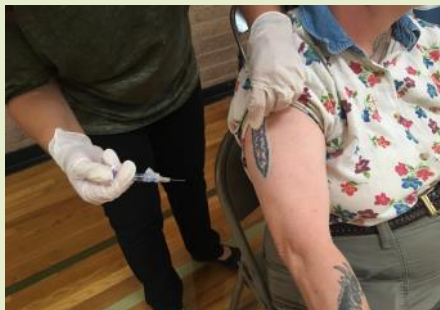
### In This Issue

- Strategic Plan begins
- Pickleball Courts at Brommer Park
- Public Health Fights Hep A Outbreak
- Homeless Census Shows Increase
- Draft Cannabis EIR Comment Period
- Gold Cup at Pinto Lake



## Gold Cup visits Pinto Lake

In a visit made possible by Allstate Insurance and CONCACAF, the Gold Cup trophy visited Pinto Lake County Park on July 25. Both Pinto Lake and the Aztecas Youth Soccer Academy received donations in conjunction with the 2017 CONCACAF Gold Cup Tournament. The following night, the U.S. team won the final match and secured the trophy.

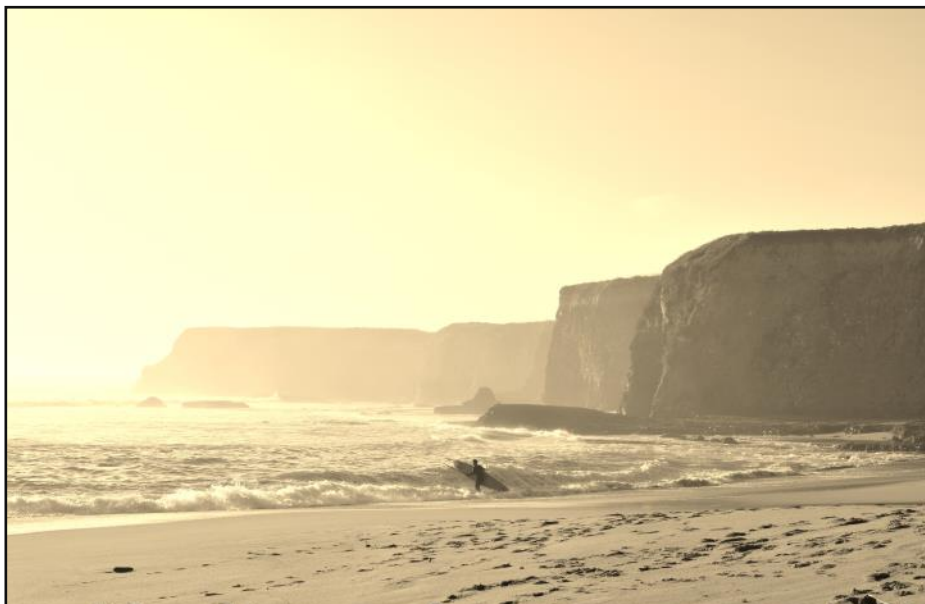


## Public Health combats hep A virus outbreak

The Santa Cruz County Public Health Department is addressing an outbreak of the hepatitis A virus, which is primarily impacting homeless and illicit drug-user populations.

Hepatitis A is an inflammation of the liver and is usually transmitted through person-to-person contact, touching contaminated surfaces or consuming contaminated food or water. Symptoms include fatigue, fever, jaundiced eyes, dark urine and more.

The outbreak is similar to a larger outbreak in San Diego, and which is beginning to affect other parts of the state. Local health officials have done outreach to impacted populations, held community vaccination clinics and done outreach to nearly 1,000 businesses about proper sanitation. For more, [click here](#).



# County's first-ever Strategic Plan begins

Santa Cruz County is embarking on its first-ever strategic plan, and we want you to come along for the ride. What kind of community do you want? How can we do better? Where should the County focus its efforts?

Called "Vision Santa Cruz County," the strategic planning process will be completed by June 2018. Between now and then, the County will engage residents, businesses, nonprofits, youth groups, churches, local governments, parks officials, libraries, schools and more to help establish a common vision and set of goals for the future of Santa Cruz County.

Your input in this process matters, and hundreds have already signed up. Go to [www.santacruzcounty.us/sp](http://www.santacruzcounty.us/sp) today to add your voice. In the coming months, the County will be conducting surveys and holding community meetings in various locations to solicit feedback. You may also see us in the community, so stop by and help educate us about what you want Santa Cruz County to be.



COUNTY OF SANTA CRUZ DEPARTMENT OF

**PARKS, OPEN SPACE AND CULTURAL SERVICES**





**2017-18 PROGRAMS & ACTIVITIES**

Looking for something to do? Whether you're 8 or 85, the Parks Department's Activity Guide is a great place to start. The 2017-18 guide is out! [Check it out!](#)

## Homeless population increases since 2015

The [2017 Santa Cruz County Point-in-Time Count](#) shows homelessness among adults and youths increasing since 2015, with the housing crisis and health issues being significant obstacles to rehousing many homeless individuals.

The 2017 census shows 2,249 homeless individuals living in Santa Cruz County, a 14.5 percent increase since the 2015 census count of 1,964. The population is largely unsheltered, one in four are women and the number of unaccompanied children and transition-age youth is on the rise. More than half report suffering from a disabling condition and most are currently employed or looking for work.

Santa Cruz County's homeless population overwhelmingly lives on the street, in vehicles or is otherwise unsheltered, with four in five lacking a roof over their heads. Most (68 percent) were living in Santa Cruz County when they became homeless, and a strong majority (59 percent) had been living here ten or more years.

The count also highlights the plight of unaccompanied minors and transition-age youths. These combined populations more than doubled between 2015 and 2017. Most are unsheltered.

## Citizen Connect



We've always updating our award-winning Citizen Connect app to give you access to anytime, anywhere services. [Download Citizen Connect](#) for iTunes and Google Play.

## Pickleball courts open at Brommer Street Park



On August 3, dozens of members of the Santa Cruz Pickleball Club helped officially open the County's first pickleball courts.

A fast-growing cross between tennis and ping-pong, pickleball can be played in singles or doubles. Community members came to the [Department of Parks, Open Space and Cultural Services](#) in search of facilities, and the first were installed at Brommer Street Park over the summer.

"We heard from residents that



this fast-growing sport was something they wanted as part of the recreational options in Santa Cruz County," Board of Supervisors Chair John Leopold said. "This court represents another step forward in making sure our parks meet the needs of the community and provide it with opportunities for a healthy lifestyle."

"We dedicate these courts to the many pickleball advocates throughout the County," Parks Director Jeff Gaffney said. "This

project represents another step forward for our department as we improve and expand our wonderful network of parks and open spaces."



Looking for employment?  
[www.santacruzcountyjobs.com](http://www.santacruzcountyjobs.com)



## Meet Your Supervisor

### [John Leopold](#)

District 1 includes Live Oak, Summit Road Soquel and parts of Capitola and Santa Cruz.



### [Zach Friend](#)

District 2 includes Aptos, Corralitos, part of Capitola and the South County coast.



### [Ryan Coonerty](#)

District 3 includes much of Santa Cruz and the North Coast.



### [Greg Caput](#)

District 4 includes most of Watsonville and the Pajaro Valley.



### [Bruce McPherson](#)

District 5 includes the San Lorenzo Valley, Scotts Valley and parts of Santa Cruz.



*Click on each supervisor to learn more about them and their responsibilities, including how to reach them during constituent office hours.*

## DOG DAY AFTERNOON

The 3rd annual Parks & Rex event held August 26 at Simpkins Family Swim Center was a huge success, with our biggest crowd yet! See you in 2018!



## Comment on draft cannabis EIR

Concerned how cannabis will impact your community?

Through Oct. 31, residents may comment on the draft cultivation and manufacturing ordinance for cannabis. The full report is available [here](#).



To submit comments, email [cannabiseir@santacruzcounty.us](mailto:cannabiseir@santacruzcounty.us). Hard copies may be mailed or hand-delivered to Cannabis Comments c/o Matt Johnston, Santa Cruz County Planning Department, 701 Ocean St., 4th Floor, Santa Cruz, CA, 95060.

## Quick Guide

Citizens rely on county government for many needed services. Use this handy guide to find who to call, or come find us on the web at: [www.santacruzcounty.us](http://www.santacruzcounty.us).

**Main Number**  
(831) 454-2000

**Board of Supervisors**  
(831) 454-2200

Agricultural Commissioner  
(831) 763-8080

Animal Services  
(831) 454-7303

Assessor's Office  
(831) 454-2002

Benefits  
(888) 421-8080

County Clerk/Elections  
(831) 454-2060

Economic Development  
(831) 454-2728

Environmental Health  
(831) 454-2022

Health Services Agency  
(831) 454-4800

Parks and Recreation  
(831) 454-7900

Planning Department  
(831) 454-2580

Public Works  
(831) 454-2160

Recycling Information  
(831) 454-2333

Sheriff/Coroner  
(831) 471-1121  
(call 911 if emergency)

Superior Court  
(831) 763-8060

Tax Collections  
(831) 454-2510