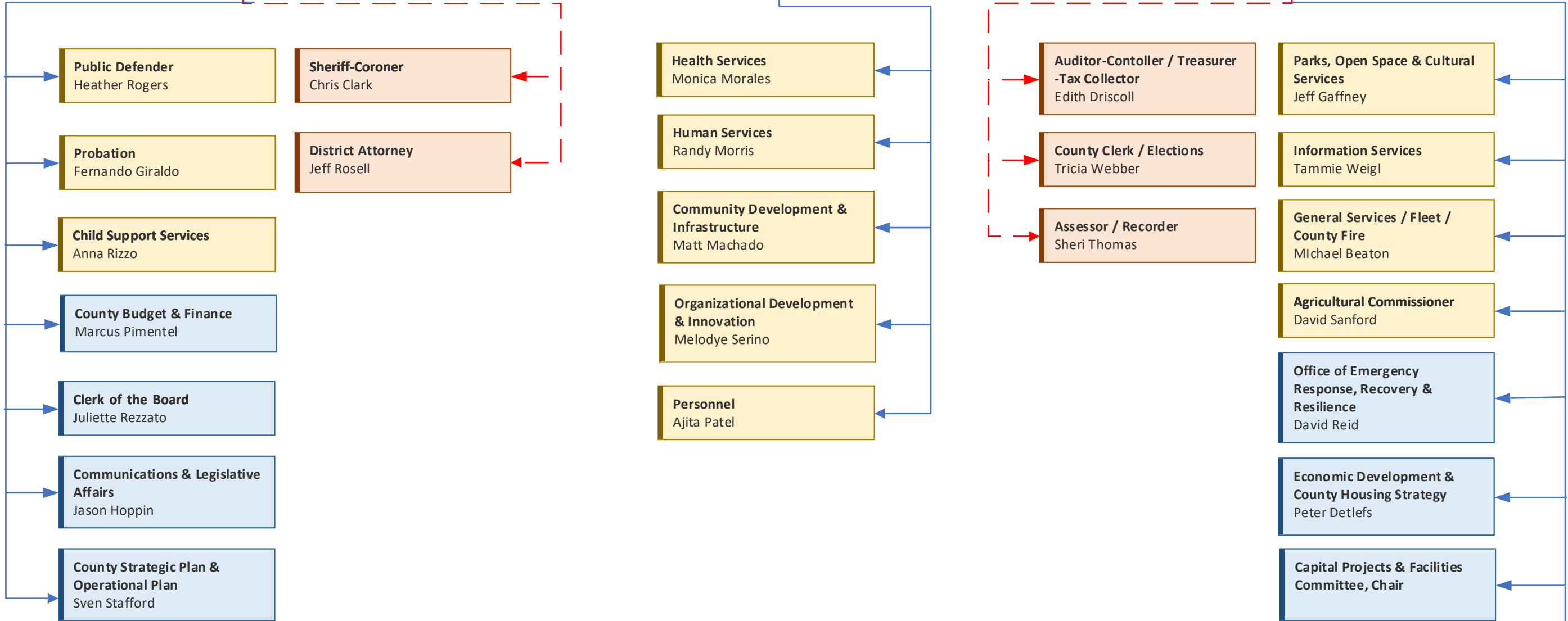


**County Executive Officer**  
Carlos Palacios

**Assistant County Executive Officer**  
Nicole Coburn  
*Public Safety & Justice*  
*Budget & Strategic Planning*

**Assistant County Executive Officer Elissa Benson**  
*General Government Operations*  
*Climate Change & Performance Management*



**LEGEND**

- Elected Official Departments ← CEO coordination and liaison relationship
- Departments reporting to County Executive Office ← CEO reporting relationship
- CEO Countywide Functions